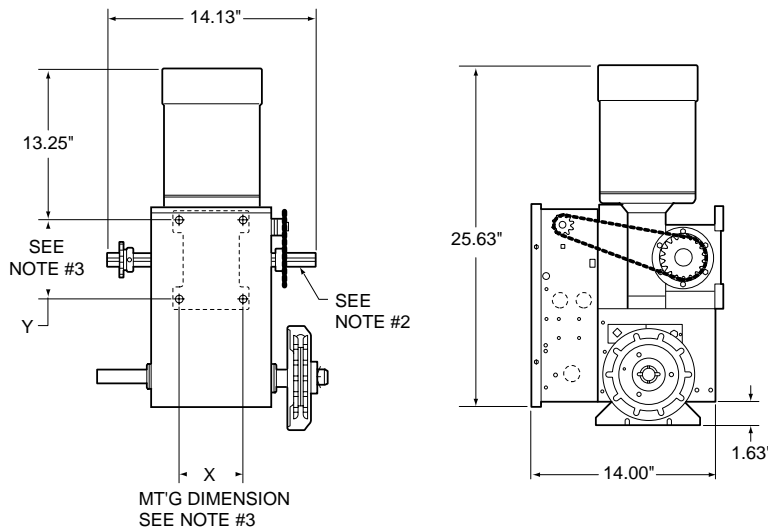


# Heavy industrial-duty door operator

## Garaga model PGH -specifications



### NOTES:

- 1) DIMENSIONS VARY WITH HORSEPOWER OF OPERATOR, MAX. DIMENSION SHOWN.
- 2) OUTPUT SHAFT WITH  
1" x 1/4" KEY FOR 1/2 THRU 1 H.P. OPERATORS  
1-3/16" x 1/4" KEY FOR 1-1/2 THRU 2 H.P. OPERATORS  
1-1/4" x 1/4" KEY USED FOR 3 H.P. OPERATORS
- 3) MT'G CENTERS  
X = 4-3/4" Y = 5-1/2" THRU 2 H.P. OPERATORS  
X = 3-17/32" Y = 9-1/16" FOR 3 H.P. OPERATORS

## STANDARD FEATURES

### ■ Model specific:

Work included – The electric operator will be Garaga model PGH as manufactured by The Chamberlain Group, Inc. Related work – Door preparation, miscellaneous or structural metal work, field electrical wiring, wire, conduit, fuses and disconnect switches are in the scope of work of other divisions or trades.

### ■ Product:

Supply Model PGH, heavy industrial-duty, cUL listed, gearhead hoist type operator(s) rated \_\_\_ H.P., \_\_\_ Volts, \_\_\_ Phase.

### ■ General:

Provide cUL listed electric door operator assembly of size and capacity recommended by door manufacturer; complete with electric motor and factory-prewired motor controls, worm-gear reduction unit, solenoid operated brake, 3-button OPEN/CLOSE/STOP control station, conduit and wiring from control to motor and accessories required for proper operation.

### ■ Electric motor:

Motor shall be high starting torque, continuous-duty, industrial type, protected against overload by a current sensing or thermal overload device.

### ■ Motor starter, controls, enclosures:

**SPECIAL NOTE TO ARCHITECT: For cUL approved Self-Monitoring Safety Operation in 115V and 208-240V single or three phase applications, select Option #1 and add "Must include a CPS II™ Self-Monitoring Sensor to detect obstructions in the doorway."**

**Option #1: For 115V (1/2 through 1 H.P.), and 208-240V (1/2 through 2 H.P.):**

**Motor Starter, Controls, Enclosures:** Motor starter shall be cUL approved solid state Triac Circuitry type. Motor starting device shall be enclosed in a NEMA 1 enclosure and integral with the operator. Control enclosures shall conform to ANSI/NEMA ICS6. OPEN/CLOSE/STOP control stations shall be NEMA type 1.

**Option #2: For 115V, 208-240V, 460V or 575V operation:**

**Motor Starter, Controls, Enclosures:** Motor starter shall be an across-the-line, mechanically interlocked, magnetic reversing contactor. Motor starting device shall be enclosed in a NEMA 1 enclosure and integral with the operator. Control enclosures shall conform to ANSI/NEMA ICS6. A NEMA type 1 OPEN/CLOSE/STOP control station shall be provided as standard equipment.

### ■ Frame and reduction:

Speed reduction shall be wormgear-in-oil-bath gear reducer with synthetic "All Climate" oil. Shall provide a 45:1 speed reduction. Door drive shall utilize #50 roller chain and sprockets; #80 roller chain and sprockets on 3 H.P. Operator shall be equipped with an electrically interlocked floor level disconnect and chain hoist for manual operation and an electric solenoid-actuated brake to stop the motor and hold the door in position. Operator shall be capable of driving the door at a speed of approximately 8 to 9 inches per second (20 to 23 cm/sec).

### ■ Limit Switches:

Fully adjustable, driven linear type limit switch mechanism shall synchronize the operator with the door. Low friction nylon limit nuts fitted on threaded steel shaft, rotating on oilite self-lubricating bronze bushings. The motor shall be removable without affecting the limit switch settings.

### ■ Execution:

Install the motor operator in accordance with Lift-Master instructions and standards and in compliance with applicable federal, state or local regulations.

### ■ Warranty:

Garaga Commercial Door Operators and accessories shall be warranted to be free of any defect in materials and workmanship for a period of two years.

**Lift-Master**  
**The Professional Line**  
**Commercial Operators**

For more information call Garaga at: (418) 227-2828

or fax Garaga at:

(418) 227-5508

Garaga's e-mail:

[info@garaga.com](mailto:info@garaga.com)

8500, 25th Ave. St-Georges • Québec, Canada G6A 1K5

CUSTOMER \_\_\_\_\_

PROJECT \_\_\_\_\_

ARCHITECT / ENGR \_\_\_\_\_

CONTRACTOR \_\_\_\_\_

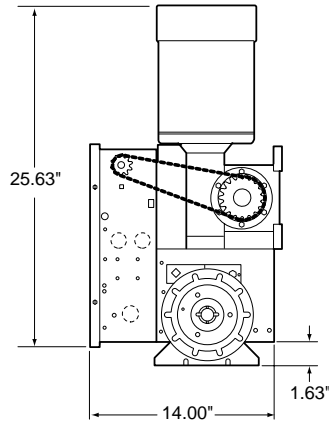
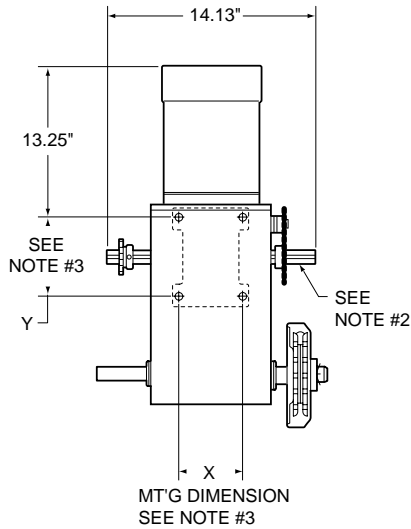
DRAWING NUMBER \_\_\_\_\_

DATE \_\_\_\_\_

SHEET \_\_\_\_\_

OF \_\_\_\_\_

## SHOP DRAWING



**NOTES:**

- 1) DIMENSIONS VARY WITH HORSEPOWER OF OPERATOR, MAX. DIMENSION SHOWN.
- 2) OUTPUT SHAFT WITH  
 1" x 1/4" KEY FOR 1/2 THRU 1 H.P. OPERATORS  
 1-3/16" x 1/4" KEY FOR 1-1/2 THRU 2 H.P. OPERATORS  
 1-1/4" x 1/4" KEY USED FOR 3 H.P. OPERATORS
- 3) MT'G CENTERS  
 X = 4-3/4" Y = 5-1/2" THRU 2 H.P. OPERATORS  
 X = 3-17/32" Y = 9-1/16" FOR 3 H.P. OPERATORS

**SPECIFICATIONS FOR ORDERING:**

- 1) SUPPLY \_\_\_\_\_ ( ) GARAGA OPERATOR(S) MODEL \_\_\_\_\_  
 \_\_\_\_\_ HP, \_\_\_\_\_ VOLTS, \_\_\_\_\_ PHASE, \_\_\_\_\_ HERTZ.
- 2) FOR \_\_\_\_\_ WIDE X \_\_\_\_\_ HIGH DOOR(S) WITH \_\_\_\_\_
- 3) SUPPLY HAND CHAIN MECHANISM ON \_\_\_\_\_ SIDE OF OPERATOR.
- 4) SUPPLY OUTPUT DRIVE SPROCKET ON \_\_\_\_\_ SIDE OF OPERATOR.
- 5) SUPPLY \_\_\_\_\_ ( ) OPEN/CLOSE/STOP CONTROL STATION(S) IN NEMA \_\_\_\_\_ ENCLOSURE PER OPERATOR.
- 6) SUPPLY AUXILIARY AND OPTIONAL EQUIPMENT AS SPECIFIED BELOW (one per operator unless otherwise noted)

**NOTES:**

- 1) REFER TO MODEL PGH PRODUCT DATA SHEET FOR GENERAL INFORMATION
- 2) REFER TO DRAWING \_\_\_\_\_ FOR WIRING DIAGRAM

HORSE POWER	MOTOR AMPERAGE RATING				
	VOLTAGE - PHASE - 60 Hz				
	115-1Ø	230-1Ø	230-3Ø	460-3Ø	575-3Ø
1/2	8.2	4.1	2.0	1.0	0.8
3/4	11.2	5.6	2.8	1.4	1.2
1	13.6	6.8	3.6	1.8	1.4
1-1/2	17.5	8.7	5.0	2.5	2.0
2	-	-	6.6	3.1	2.5
3	-	-	9.0	4.5	-